

Please check the examination details below before entering your candidate information

Candidate surname

Other names

Centre Number

Candidate Number

Pearson Edexcel International Advanced Level

Tuesday 16 January 2024

Morning (Time: 1 hour 30 minutes)

Paper
reference

WCH12/01

Chemistry

International Advanced Subsidiary/Advanced Level

**UNIT 2: Energetics, Group Chemistry,
Halogenoalkanes and Alcohols**

You must have:

Scientific calculator, Data Booklet

Total Marks

Instructions

- Use **black** ink or ball-point pen.
- If pencil is used for diagrams/sketches/graphs it must be dark (HB or B).
- **Fill in the boxes** at the top of this page with your name, centre number and candidate number.
- Answer **all** questions.
- Answer the questions in the spaces provided
– *there may be more space than you need.*
- Show all your working in calculations and include units where appropriate.

Information

- The total mark for this paper is 80.
- The marks for **each** question are shown in brackets
– *use this as a guide as to how much time to spend on each question.*
- In the question marked with an **asterisk (*)**, marks will be awarded for your ability to structure your answer logically, showing how the points that you make are related or follow on from each other where appropriate.
- There is a Periodic Table on the back cover of this paper.

Advice

- Read each question carefully before you start to answer it.
- Try to answer every question.
- Check your answers if you have time at the end.

Turn over ►

P75592A

©2024 Pearson Education Ltd.
S:1/1/1/




Pearson

SECTION A

Answer ALL the questions in this section.

You should aim to spend no more than 20 minutes on this section.

For each question, select one answer from A to D and put a cross in the box . If you change your mind, put a line through the box and then mark your new answer with a cross .

1 Which compound has intermolecular hydrogen bonding?

- A HF
- B H₂Te
- C AsH₃
- D SnH₄

(Total for Question 1 = 1 mark)

2 In which process are intermolecular hydrogen bonds broken?

- A H₂(g) → 2H(g)
- B H₂O(l) → H₂O(g)
- C H₂(l) → H₂(g)
- D H₂(g) + ½O₂(g) → H₂O(g)

(Total for Question 2 = 1 mark)

3 A compound contains

- molecules with non-polar bonds
- permanent dipole-permanent dipole forces between its molecules.

What could be the formula of this compound?
Use the Data Booklet as a source of information.

- A NO
- B BeCl₂
- C PH₃
- D Cl₄

(Total for Question 3 = 1 mark)

DO NOT WRITE IN THIS AREA

DO NOT WRITE IN THIS AREA

DO NOT WRITE IN THIS AREA

DO NOT WRITE IN THIS AREA

DO NOT WRITE IN THIS AREA

DO NOT WRITE IN THIS AREA



4 Which alkane has the strongest London forces in the liquid phase?

- A $(\text{CH}_3)_4\text{C}$
- B $\text{CH}_3\text{CH}_2\text{CH}_2\text{CH}_2\text{CH}_3$
- C $(\text{C}_2\text{H}_5)_4\text{C}$
- D $\text{CH}_3(\text{CH}_2)_7\text{CH}_3$

(Total for Question 4 = 1 mark)

5 In which liquid solvent would the solubility of lithium chloride (LiCl) be lowest?

- A ammonia
- B cyclohexane
- C methanol
- D water

(Total for Question 5 = 1 mark)

6 Which compound does **not** contain an element with an oxidation number of -1 ?

- A HF
- B NaH
- C H_2O_2
- D CH_4

(Total for Question 6 = 1 mark)

7 Which reaction involves the oxidation of a Group 7 element?

- A $\text{Br}_2 + \text{F}_2 \rightarrow 2\text{BrF}$
- B $\text{U} + 3\text{ClF}_3 \rightarrow \text{UF}_6 + 3\text{ClF}$
- C $2\text{F}_2 + 2\text{H}_2\text{O} \rightarrow 4\text{HF} + \text{O}_2$
- D $\text{KCl} + \text{H}_2\text{SO}_4 \rightarrow \text{HCl} + \text{KHSO}_4$

(Total for Question 7 = 1 mark)

Use this space for any rough working. Anything you write in this space will gain no credit.



8 Equal volumes of some 0.01 mol dm^{-3} solutions were mixed.

Which pair of solutions gave the greatest mass of precipitate?

- A BaCl_2 and AgNO_3
- B BaCl_2 and Ag_2SO_4
- C BaCl_2 and NaNO_3
- D BaCl_2 and Na_2SO_4

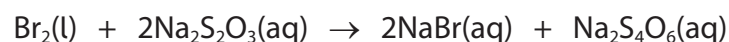
(Total for Question 8 = 1 mark)

9 Which test reagent could be used to identify an aqueous solution containing hydrogencarbonate ions, HCO_3^- ?

- A sodium carbonate
- B sodium hydroxide
- C nitric acid
- D ammonia

(Total for Question 9 = 1 mark)

10 Bromine, $\text{Br}_2(\text{l})$, can be disposed of safely by reaction with aqueous sodium thiosulfate, $\text{Na}_2\text{S}_2\text{O}_3(\text{aq})$.



What is the minimum volume, in cm^3 , of 0.5 mol dm^{-3} $\text{Na}_2\text{S}_2\text{O}_3(\text{aq})$ needed to react completely with 0.01 mol of $\text{Br}_2(\text{l})$?

- A 0.01
- B 0.04
- C 10
- D 40

(Total for Question 10 = 1 mark)

Use this space for any rough working. Anything you write in this space will gain no credit.

DO NOT WRITE IN THIS AREA

DO NOT WRITE IN THIS AREA

DO NOT WRITE IN THIS AREA

DO NOT WRITE IN THIS AREA

DO NOT WRITE IN THIS AREA

DO NOT WRITE IN THIS AREA



DO NOT WRITE IN THIS AREA

DO NOT WRITE IN THIS AREA

11 What is the mass of nitrogen **atoms** in 50 cm³ of a 2.0 mol dm⁻³ solution of ammonium nitrate, NH₄NO₃(aq)?

- A 35 g
- B 8.0 g
- C 2.8 g
- D 1.4 g

(Total for Question 11 = 1 mark)

12 Which row shows the correct trends **down** the group for the elements of Group 7?

	Boiling temperature	Electronegativity	Reactivity as oxidising agent
<input type="checkbox"/> A	increases	decreases	decreases
<input type="checkbox"/> B	decreases	increases	increases
<input type="checkbox"/> C	increases	decreases	increases
<input type="checkbox"/> D	decreases	increases	decreases

(Total for Question 12 = 1 mark)

13 Which statement **best** explains why the rate of a chemical reaction increases with increasing temperature?

- A the activation energy decreases
- B the number of collisions increases
- C the kinetic energy of the particles increases
- D the frequency of collisions with $E \geq E_a$ increases

(Total for Question 13 = 1 mark)

Use this space for any rough working. Anything you write in this space will gain no credit.



14 Which statement is **not** true for a system at dynamic equilibrium?

- A the position of equilibrium is affected by temperature, by pressure and by catalysts
- B the concentration of reactants is constant
- C the forward and backward reactions occur at equal rates
- D the equilibrium can be reached from either direction

(Total for Question 14 = 1 mark)

15 Silver nitrate, in aqueous ethanol, is added separately to four halogenoalkanes.

Which would form a silver halide precipitate in the shortest time?

- A 1-bromobutane
- B 1-chlorobutane
- C 1-fluorobutane
- D 1-iodobutane

(Total for Question 15 = 1 mark)

16 What is the total number of structural isomers for cyclic alcohols with the molecular formula C_4H_8O ?

- A 2
- B 3
- C 4
- D 5

(Total for Question 16 = 1 mark)

Use this space for any rough working. Anything you write in this space will gain no credit.

DO NOT WRITE IN THIS AREA

DO NOT WRITE IN THIS AREA

DO NOT WRITE IN THIS AREA

DO NOT WRITE IN THIS AREA

DO NOT WRITE IN THIS AREA

DO NOT WRITE IN THIS AREA



DO NOT WRITE IN THIS AREA

DO NOT WRITE IN THIS AREA

17 Which is a correct equation for the **incomplete** combustion of butan-1-ol?

- A $\text{CH}_3\text{CH}_2\text{CH}_2\text{CH}_2\text{OH} + 6\text{O}_2 \rightarrow 4\text{CO}_2 + 5\text{H}_2\text{O}$
- B $\text{CH}_3\text{CH}_2\text{CH}_2\text{CH}_2\text{OH} + 6\frac{1}{2}\text{O}_2 \rightarrow 4\text{CO}_2 + 5\text{H}_2\text{O}$
- C $\text{CH}_3\text{CH}_2\text{CH}_2\text{CH}_2\text{OH} + 4\text{O}_2 \rightarrow 4\text{CO} + 5\text{H}_2\text{O}$
- D $\text{CH}_3\text{CH}_2\text{CH}_2\text{CH}_2\text{OH} + 4\frac{1}{2}\text{O}_2 \rightarrow 4\text{CO} + 5\text{H}_2\text{O}$

(Total for Question 17 = 1 mark)

DO NOT WRITE IN THIS AREA

DO NOT WRITE IN THIS AREA

18 Which reagent(s) could be used to produce a chloroalkane from a **tertiary** alcohol?

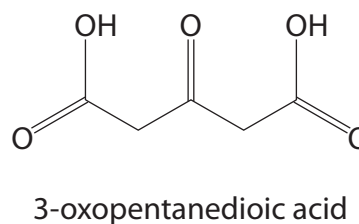
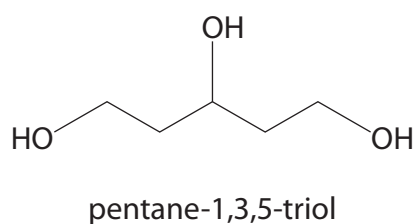
- 1 PCl_5
 - 2 concentrated HCl
 - 3 concentrated H_2SO_4 and KCl
- A 1, 2 and 3
- B 1 and 3 only
- C 2 and 3 only
- D 1 only

(Total for Question 18 = 1 mark)

DO NOT WRITE IN THIS AREA

DO NOT WRITE IN THIS AREA

19 What amount, in mol, of $[\text{O}]$ is needed to convert 1 mol of pentane-1,3,5-triol into 3-oxopentanedioic acid and water?

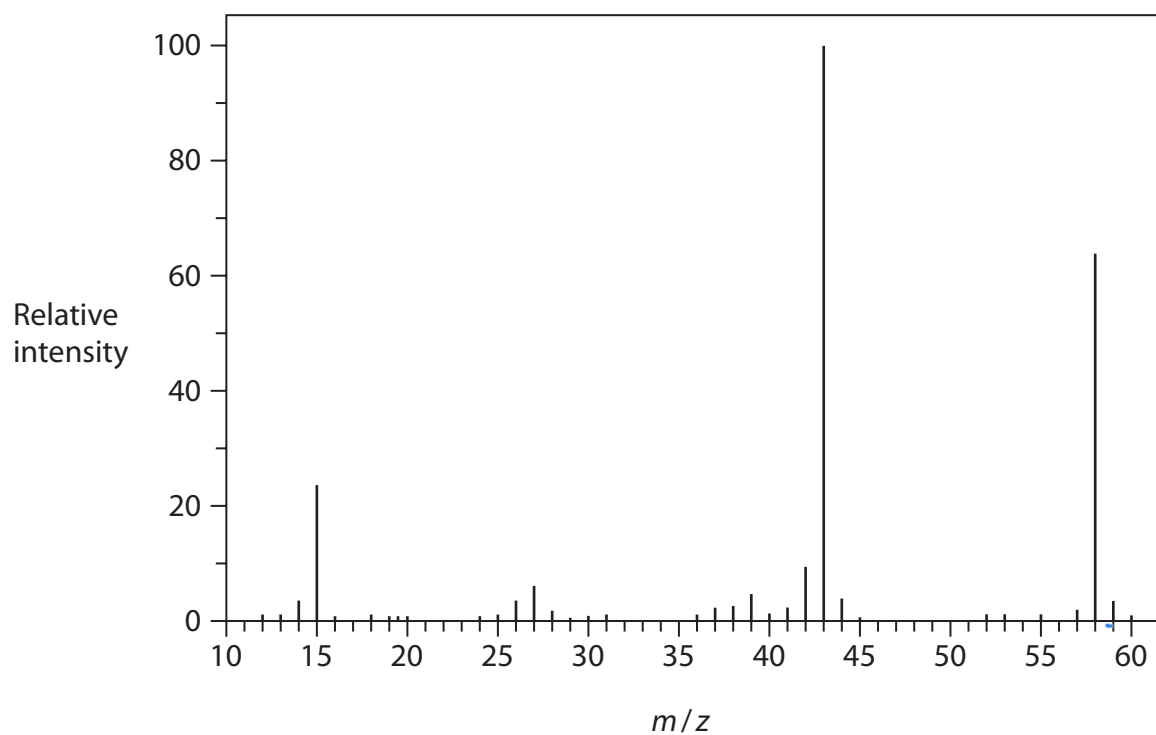


- A 2
- B 3
- C 4
- D 5

(Total for Question 19 = 1 mark)



20 Which compound gives this mass spectrum?



- A CH_3COOH
- B CH_3COCH_3
- C $\text{CH}_3\text{CH}_2\text{CHO}$
- D $\text{CH}_3\text{CH}_2\text{CH}_2\text{CH}_3$

(Total for Question 20 = 1 mark)

TOTAL FOR SECTION A = 20 MARKS

DO NOT WRITE IN THIS AREA

DO NOT WRITE IN THIS AREA

DO NOT WRITE IN THIS AREA

DO NOT WRITE IN THIS AREA

DO NOT WRITE IN THIS AREA

DO NOT WRITE IN THIS AREA



DO NOT WRITE IN THIS AREA

DO NOT WRITE IN THIS AREA

DO NOT WRITE IN THIS AREA

DO NOT WRITE IN THIS AREA

DO NOT WRITE IN THIS AREA

DO NOT WRITE IN THIS AREA

BLANK PAGE



SECTION B

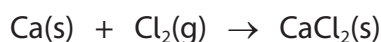
Answer ALL the questions. Write your answers in the spaces provided.

21 This question is about the element calcium and some of its compounds.

- (a) Give the complete electronic configuration, using s, p, d notation, of a calcium atom in the ground state.

(1)

- (b) Calcium reacts with chlorine to form calcium chloride.



- (i) Explain, in terms of oxidation numbers, why this is a redox reaction.

(2)

- (ii) Complete the table to indicate the type(s) of bonding and structure in the species involved in this reaction.

(3)

Species	Bonding	Structure
Ca(s)		
	covalent	
		giant

- (iii) State the expected flame colour when CaCl₂ is used in a flame test.

(1)

DO NOT WRITE IN THIS AREA

DO NOT WRITE IN THIS AREA

DO NOT WRITE IN THIS AREA

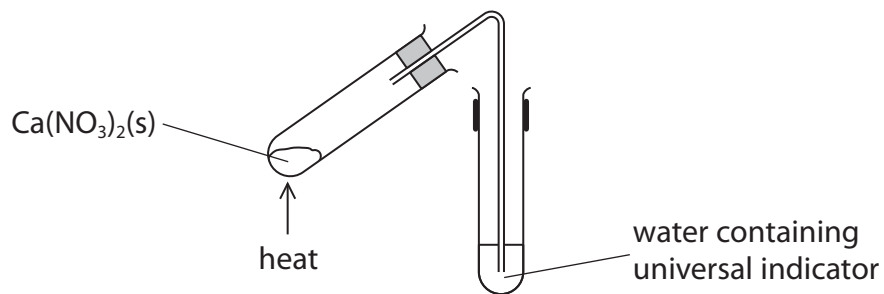
DO NOT WRITE IN THIS AREA

DO NOT WRITE IN THIS AREA

DO NOT WRITE IN THIS AREA



(c) A sample of solid anhydrous calcium nitrate, $\text{Ca}(\text{NO}_3)_2(\text{s})$, is heated strongly for several minutes in the apparatus shown.



(i) State **two** observations that would be made.

(2)

1

.....

2

.....

(ii) Explain why the observations from (c)(i) would be made more quickly if the experiment was repeated with solid anhydrous magnesium nitrate, $\text{Mg}(\text{NO}_3)_2(\text{s})$.

(3)

.....

.....

.....

.....

.....

.....

.....

.....

.....

.....

.....

.....

.....

.....

.....

.....



P 7 5 5 9 2 A 0 1 1 2 8

*(d) Samples of calcium and magnesium are added to separate test tubes of cold water containing a few drops of universal indicator.

State and explain the differences in the observations made in each experiment.

Include an equation in your answer.

(6)

Area with horizontal dotted lines for writing the answer.

DO NOT WRITE IN THIS AREA

DO NOT WRITE IN THIS AREA

DO NOT WRITE IN THIS AREA

DO NOT WRITE IN THIS AREA

DO NOT WRITE IN THIS AREA

DO NOT WRITE IN THIS AREA



DO NOT WRITE IN THIS AREA

DO NOT WRITE IN THIS AREA

DO NOT WRITE IN THIS AREA

DO NOT WRITE IN THIS AREA

DO NOT WRITE IN THIS AREA

DO NOT WRITE IN THIS AREA

Handwriting practice area with 20 horizontal dotted lines.

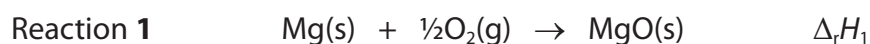
(Total for Question 21 = 18 marks)



P 7 5 5 9 2 A 0 1 3 2 8

22 This question is about enthalpy changes.

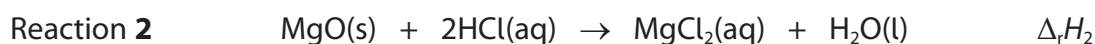
A student wanted to use Hess's Law to determine the enthalpy change, $\Delta_r H_1$, in kJ mol^{-1} , for Reaction 1.



(a) Explain why $\Delta_r H_1$ can also be described as an enthalpy change of formation.

(2)

(b) The student carried out an experiment to determine the enthalpy change of reaction, $\Delta_r H_2$, in kJ mol^{-1} , for Reaction 2.



0.189 g of solid magnesium oxide was added to excess hydrochloric acid in a polystyrene cup and stirred until the reaction was complete.

The total mass of the solution formed was 25.0 g.

During the experiment, the temperature increased from 21.5°C to 28.0°C .

Calculate $\Delta_r H_2$, in kJ mol^{-1} , including a sign.

Give your answer to an appropriate number of significant figures.

[Specific heat capacity of the solution = $4.18 \text{ J g}^{-1} \text{ }^\circ\text{C}^{-1}$.]

(4)

DO NOT WRITE IN THIS AREA

DO NOT WRITE IN THIS AREA

DO NOT WRITE IN THIS AREA

DO NOT WRITE IN THIS AREA

DO NOT WRITE IN THIS AREA

DO NOT WRITE IN THIS AREA

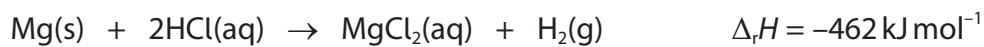


- (c) Calculate the enthalpy change of reaction, $\Delta_r H_1$, for Reaction 1.
Use your answer to (b), the data provided and the enthalpy cycle shown.

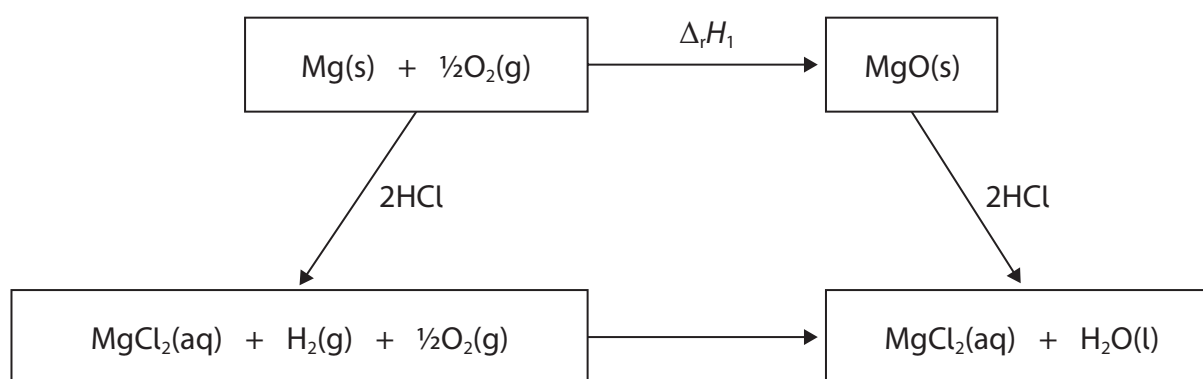
[If you did not calculate an answer to (b), use a value of -100 kJ mol^{-1} .
This is **not** the correct answer.]

(2)

Data



Enthalpy cycle



(Total for Question 22 = 8 marks)





DO NOT WRITE IN THIS AREA

DO NOT WRITE IN THIS AREA

DO NOT WRITE IN THIS AREA

DO NOT WRITE IN THIS AREA

DO NOT WRITE IN THIS AREA

DO NOT WRITE IN THIS AREA

BLANK PAGE



23 This question is about bromoalkanes with the molecular formula C_4H_9Br .

(a) (i) Give the IUPAC name of the only C_4H_9Br tertiary bromoalkane. (1)

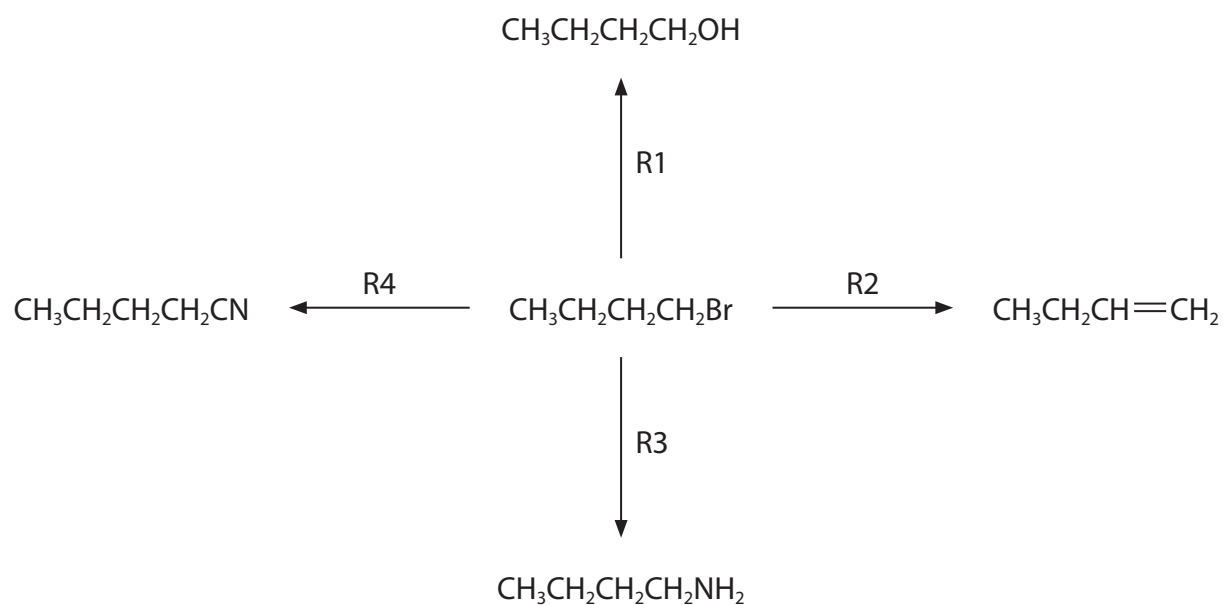
(ii) Draw the **displayed** formula of the only C_4H_9Br secondary bromoalkane. (1)

(iii) Draw the **skeletal** formula of the only branched-chain C_4H_9Br primary bromoalkane. (1)

(b) Give the structure of the C_4H_9Br bromoalkane that would react fastest with aqueous silver nitrate in ethanol. (1)



(c) Some reactions of $\text{CH}_3\text{CH}_2\text{CH}_2\text{CH}_2\text{Br}$ are shown.



(i) Complete the table.

(4)

Reaction	Name of mechanism	Formula of reagent	Condition(s)
R1	nucleophilic substitution		
R2			heat in ethanol
R3		NH_3	
R4			heat in ethanol

DO NOT WRITE IN THIS AREA

DO NOT WRITE IN THIS AREA

DO NOT WRITE IN THIS AREA

DO NOT WRITE IN THIS AREA

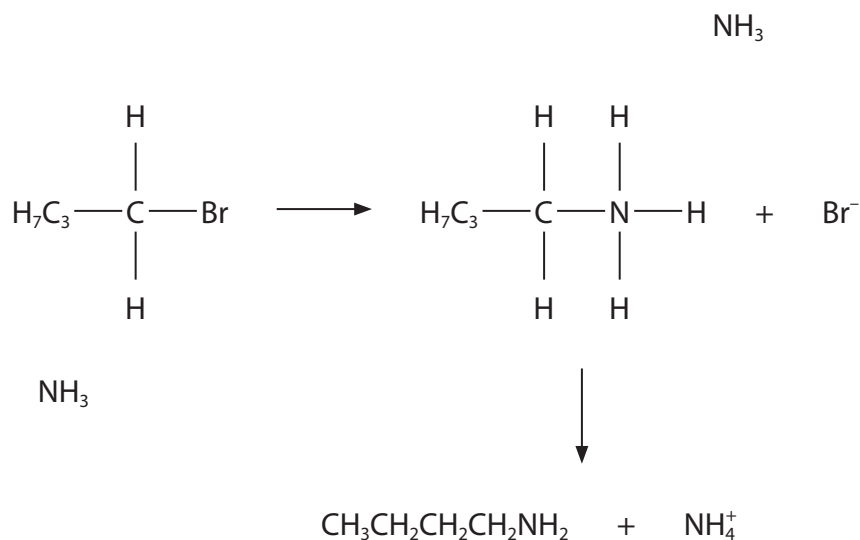
DO NOT WRITE IN THIS AREA

DO NOT WRITE IN THIS AREA



- (ii) Complete the mechanism for reaction R3.
Include curly arrows, and any relevant lone pairs, dipoles and charges.

(4)



- (iii) Give the wavenumber range of an absorption in the infrared spectrum of the organic product of reaction R4, which is **not** present in the infrared spectrum of $\text{CH}_3\text{CH}_2\text{CH}_2\text{CH}_2\text{Br}$.
Indicate the bond responsible for this absorption.

(2)

Wavenumber range

Bond

(Total for Question 23 = 14 marks)

TOTAL FOR SECTION B = 40 MARKS



SECTION C

Answer ALL the questions. Write your answers in the spaces provided.

24 The elements of Group 7, the halogens, have many important uses.

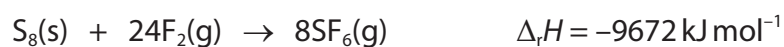
Fluorine is used to make sulfur hexafluoride, SF_6 , a gas which is used as an insulator in electrical equipment.

Chlorine is used as a bleach and as a disinfectant in water treatment.

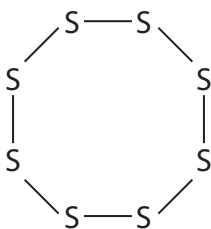
Bromine is used to make organic chemicals that are used as fire retardants.

Iodine has been used in the catalyst in the manufacture of ethanoic acid.

(a) SF_6 can be made from the reaction of sulfur, S_8 , with fluorine.



The structure of $\text{S}_8(\text{s})$ is shown.



Bond enthalpy data

Bond	Mean bond enthalpy / kJ mol^{-1}
S—S	268
F—F	151

(i) Calculate the mean bond enthalpy, in kJ mol^{-1} , for a single S—F bond.

(3)

DO NOT WRITE IN THIS AREA

DO NOT WRITE IN THIS AREA

DO NOT WRITE IN THIS AREA

DO NOT WRITE IN THIS AREA

DO NOT WRITE IN THIS AREA

DO NOT WRITE IN THIS AREA



(ii) Give **two** reasons why your answer to (a)(i) is unlikely to accurately represent the true S—F bond enthalpy in SF₆.

(2)

.....

.....

.....

.....

.....

.....

(iii) SF₆ is a potent greenhouse gas.

1.00 g of SF₆ absorbs the same amount of infrared radiation as 23.9 kg of CO₂.

Calculate the number of molecules of CO₂, to the nearest whole number, that absorb the same amount of infrared radiation as one molecule of SF₆ in the atmosphere.

(3)

.....

.....

.....

.....

.....

.....

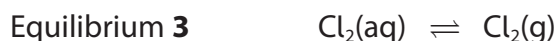
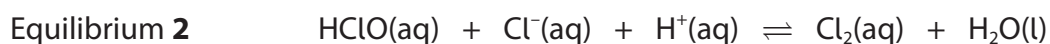


P 7 5 5 9 2 A 0 2 1 2 8

(b) Bleach, NaClO(aq), is formed by the reaction of chlorine with cold, dilute aqueous sodium hydroxide.



The following species and equilibria are present in solutions of NaClO(aq).



Household bleach is stored at a pH between 11 and 13.
Household bleach should not be stored near strong acid.

(i) Give the formula of the chlorine-containing species present at highest concentration in household bleach at pH 12.

(1)

(ii) Explain why mixing strong acid with bleach is dangerous.
Justify your answer using the equilibria shown.

(3)

DO NOT WRITE IN THIS AREA

DO NOT WRITE IN THIS AREA

DO NOT WRITE IN THIS AREA

DO NOT WRITE IN THIS AREA

DO NOT WRITE IN THIS AREA

DO NOT WRITE IN THIS AREA

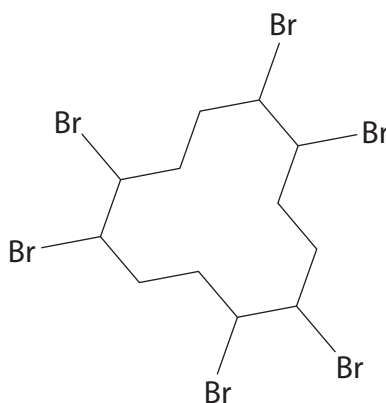


(iii) On heating, NaClO disproportionates to form sodium chloride and sodium chlorate(V).

Give the equation for this disproportionation reaction.
State symbols are **not** required.

(2)

(c) The structure of a fire retardant is shown.



Calculate the percentage by mass of bromine in this fire retardant.
Give your answer to an appropriate number of significant figures.

(2)



(d) The industrial manufacture of ethanoic acid first used an iodine-based catalyst.

Explain, with the aid of a labelled Maxwell–Boltzmann distribution, how a catalyst increases the rate of a chemical reaction.

(4)



.....

.....

.....

.....

.....

.....

.....

(Total for Question 24 = 20 marks)

TOTAL FOR SECTION C = 20 MARKS
TOTAL FOR PAPER = 80 MARKS

DO NOT WRITE IN THIS AREA

DO NOT WRITE IN THIS AREA

DO NOT WRITE IN THIS AREA

DO NOT WRITE IN THIS AREA

DO NOT WRITE IN THIS AREA

DO NOT WRITE IN THIS AREA



DO NOT WRITE IN THIS AREA

DO NOT WRITE IN THIS AREA

DO NOT WRITE IN THIS AREA

DO NOT WRITE IN THIS AREA

DO NOT WRITE IN THIS AREA

DO NOT WRITE IN THIS AREA

BLANK PAGE



P 7 5 5 9 2 A 0 2 5 2 8



DO NOT WRITE IN THIS AREA

DO NOT WRITE IN THIS AREA

DO NOT WRITE IN THIS AREA

DO NOT WRITE IN THIS AREA

DO NOT WRITE IN THIS AREA

DO NOT WRITE IN THIS AREA

BLANK PAGE



DO NOT WRITE IN THIS AREA

DO NOT WRITE IN THIS AREA

DO NOT WRITE IN THIS AREA

DO NOT WRITE IN THIS AREA

DO NOT WRITE IN THIS AREA

DO NOT WRITE IN THIS AREA

BLANK PAGE



P 7 5 5 9 2 A 0 2 7 2 8

The Periodic Table of Elements



1	2											3	4	5	6	7	0 (8)
(1)	(2)											(13)	(14)	(15)	(16)	(17)	(18)
6.9 Li lithium 3	9.0 Be beryllium 4	<div style="border: 1px solid black; padding: 5px; width: fit-content; margin: auto;"> Key relative atomic mass atomic symbol name atomic (proton) number </div>										10.8 B boron 5	12.0 C carbon 6	14.0 N nitrogen 7	16.0 O oxygen 8	19.0 F fluorine 9	20.2 Ne neon 10
23.0 Na sodium 11	24.3 Mg magnesium 12	(3)	(4)	(5)	(6)	(7)	(8)	(9)	(10)	(11)	(12)	27.0 Al aluminium 13	28.1 Si silicon 14	31.0 P phosphorus 15	32.1 S sulfur 16	35.5 Cl chlorine 17	39.9 Ar argon 18
39.1 K potassium 19	40.1 Ca calcium 20	45.0 Sc scandium 21	47.9 Ti titanium 22	50.9 V vanadium 23	52.0 Cr chromium 24	54.9 Mn manganese 25	55.8 Fe iron 26	58.9 Co cobalt 27	58.7 Ni nickel 28	63.5 Cu copper 29	65.4 Zn zinc 30	69.7 Ga gallium 31	72.6 Ge germanium 32	74.9 As arsenic 33	79.0 Se selenium 34	79.9 Br bromine 35	83.8 Kr krypton 36
85.5 Rb rubidium 37	87.6 Sr strontium 38	88.9 Y yttrium 39	91.2 Zr zirconium 40	92.9 Nb niobium 41	95.9 Mo molybdenum 42	[98] Tc technetium 43	101.1 Ru ruthenium 44	102.9 Rh rhodium 45	106.4 Pd palladium 46	107.9 Ag silver 47	112.4 Cd cadmium 48	114.8 In indium 49	118.7 Sn tin 50	121.8 Sb antimony 51	127.6 Te tellurium 52	126.9 I iodine 53	131.3 Xe xenon 54
132.9 Cs caesium 55	137.3 Ba barium 56	138.9 La* lanthanum 57	178.5 Hf hafnium 72	180.9 Ta tantalum 73	183.8 W tungsten 74	186.2 Re rhenium 75	190.2 Os osmium 76	192.2 Ir iridium 77	195.1 Pt platinum 78	197.0 Au gold 79	200.6 Hg mercury 80	204.4 Tl thallium 81	207.2 Pb lead 82	209.0 Bi bismuth 83	[209] Po polonium 84	[210] At astatine 85	[222] Rn radon 86
[223] Fr francium 87	[226] Ra radium 88	[227] Ac* actinium 89	[261] Rf rutherfordium 104	[262] Db dubnium 105	[266] Sg seaborgium 106	[264] Bh bohrium 107	[277] Hs hassium 108	[268] Mt meitnerium 109	[271] Ds darmstadtium 110	[272] Rg roentgenium 111	Elements with atomic numbers 112-116 have been reported but not fully authenticated						
* Lanthanide series		140 Ce cerium 58	141 Pr praseodymium 59	144 Nd neodymium 60	[147] Pm promethium 61	150 Sm samarium 62	152 Eu europium 63	157 Gd gadolinium 64	159 Tb terbium 65	163 Dy dysprosium 66	165 Ho holmium 67	167 Er erbium 68	169 Tm thulium 69	173 Yb ytterbium 70	175 Lu lutetium 71		
* Actinide series		232 Th thorium 90	[231] Pa protactinium 91	238 U uranium 92	[237] Np neptunium 93	[242] Pu plutonium 94	[243] Am americium 95	[247] Cm curium 96	[245] Bk berkelium 97	[251] Cf californium 98	[254] Es einsteinium 99	[253] Fm fermium 100	[256] Md mendelevium 101	[254] No nobelium 102	[257] Lr lawrencium 103		

DO NOT WRITE IN THIS AREA

DO NOT WRITE IN THIS AREA

DO NOT WRITE IN THIS AREA