

Please check the examination details below before entering your candidate information

Candidate surname

Other names

Centre Number

Candidate Number

--	--	--	--	--

--	--	--	--	--

Pearson Edexcel International Advanced Level

Thursday 8 January 2026

Morning (Time: 1 hour 30 minutes)

Paper
reference

WMA11/01

Mathematics

**International Advanced Subsidiary/Advanced Level
Pure Mathematics P1**

You must have:

Mathematical Formulae and Statistical Tables (Yellow), calculator

Total Marks

Candidates may use any calculator permitted by Pearson regulations. Calculators must not have the facility for symbolic algebra manipulation, differentiation and integration, or have retrievable mathematical formulae stored in them.

Instructions

- Use **black** ink or ball-point pen.
- If pencil is used for diagrams/sketches/graphs it must be dark (HB or B).
- **Fill in the boxes** at the top of this page with your name, centre number and candidate number.
- Answer **all** questions and ensure that your answers to parts of questions are clearly labelled.
- Answer the questions in the spaces provided
– *there may be more space than you need.*
- You should show sufficient working to make your methods clear. Answers without working may not gain full credit.
- Inexact answers should be given to three significant figures unless otherwise stated.

Information

- A booklet 'Mathematical Formulae and Statistical Tables' is provided.
- There are 9 questions in this question paper. The total mark for this paper is 75.
- The marks for **each** question are shown in brackets
– *use this as a guide as to how much time to spend on each question.*

Advice

- Read each question carefully before you start to answer it.
- Try to answer every question.
- Check your answers if you have time at the end.
- If you change your mind about an answer, cross it out and put your new answer and any working underneath.

Turn over ►

P83171A

©2026 Pearson Education Ltd.
C:1/1/1/1/




Pearson

3. (i) Find the range of values of z for which

$$\frac{4}{z} < 8$$

giving the answer in simplest form.

(2)

(ii)

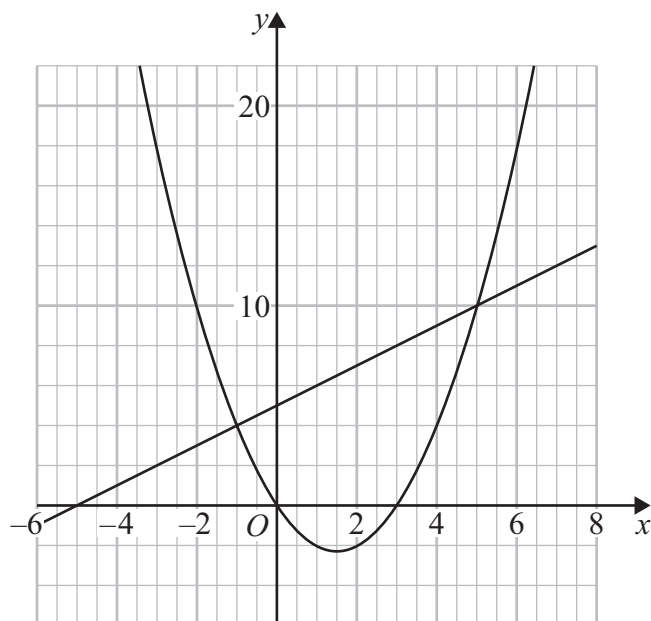


Figure 1

Figure 1 shows a plot of

- the line with equation $y = x + 5$
- the curve with equation $y = x(x - 3)$

On the opposite page there is a copy of Figure 1 labelled Diagram 1.

On Diagram 1 represent the following inequality graphically.

$$x + 5 \leq y \leq x(x - 3) \quad \text{for } x \geq -2$$

(3)



6.

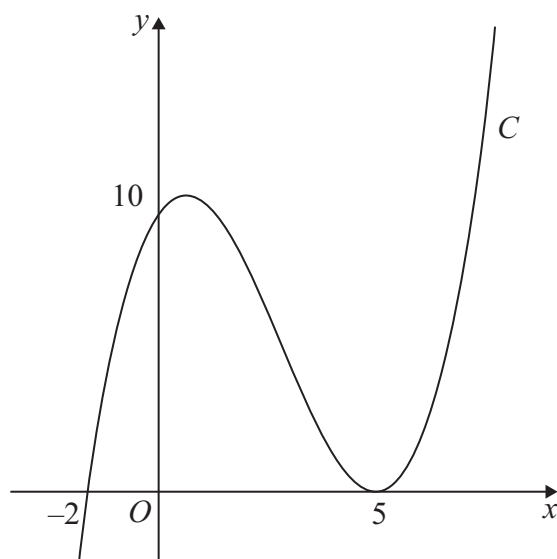


Figure 3

Figure 3 shows a sketch of the curve C with equation $y = f(x)$ where $f(x)$ is a cubic function in x .

The curve C

- cuts the x -axis at $(-2, 0)$ and cuts the y -axis at $(0, 10)$
- touches the x -axis at $(5, 0)$

as shown in Figure 3.

(a) Deduce the roots of the equation

(i) $f\left(\frac{1}{3}x\right) = 0$

(ii) $f(x - 3) = 0$

(2)

(b) Find an expression for $f(x)$. You should leave your answer in factorised form.

(3)

The curve C intersects the straight line $y = 10(x + 2)$ at exactly three points.

(c) Use algebra to find the exact x coordinates of the three points of intersection.

(Solutions based entirely on calculator technology are not acceptable.)

(4)



9.

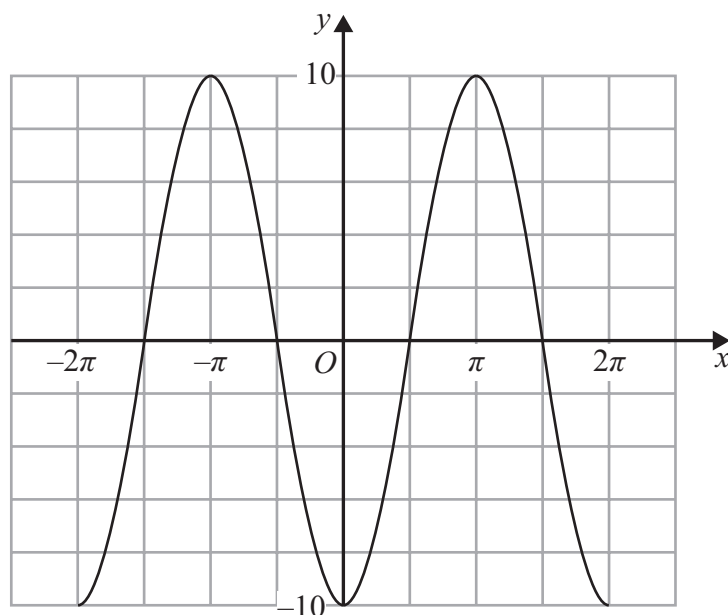


Figure 4

Figure 4 shows a sketch of part of the graph of the trigonometric function with equation $y = f(x)$.

(a) Write down an expression for $f(x)$.

(2)

Copies of Figure 4 (labelled Diagram 1 and Diagram 2) can be found on the following pages.

(b) (i) On Diagram 1 sketch a graph of the curve with equation

$$y = 10 - x^2$$

(ii) Hence find the **number** of solutions of the equation

$$f(x) = 10 - x^2 \quad \text{in the interval} \quad -100\pi \leq x \leq 100\pi$$

(3)

(c) (i) On Diagram 2 sketch a graph of the curve with equation

$$y = \tan x \quad -2\pi \leq x \leq 2\pi$$

(ii) Hence find the **number** of solutions of the equation

$$f(x) = \tan x \quad \text{in the interval} \quad -100\pi \leq x \leq 100\pi$$

giving a reason for your answer.

(4)



Question 9 continued

(a) _____

(b)(i)

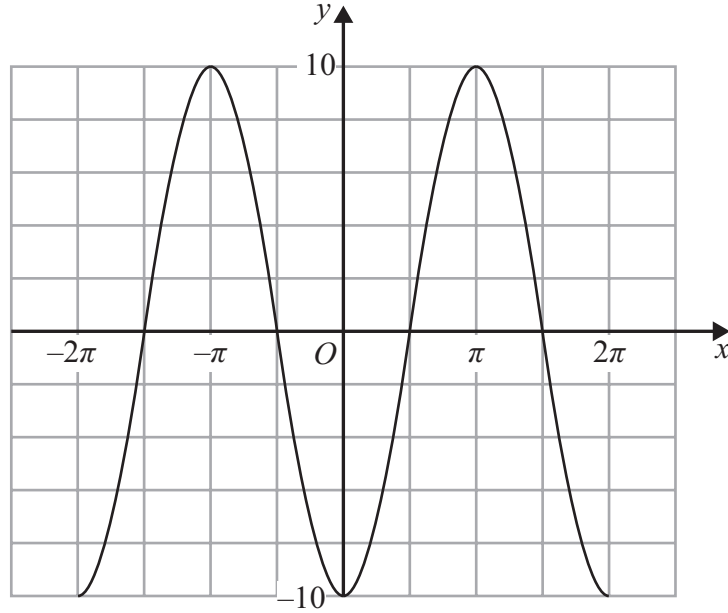
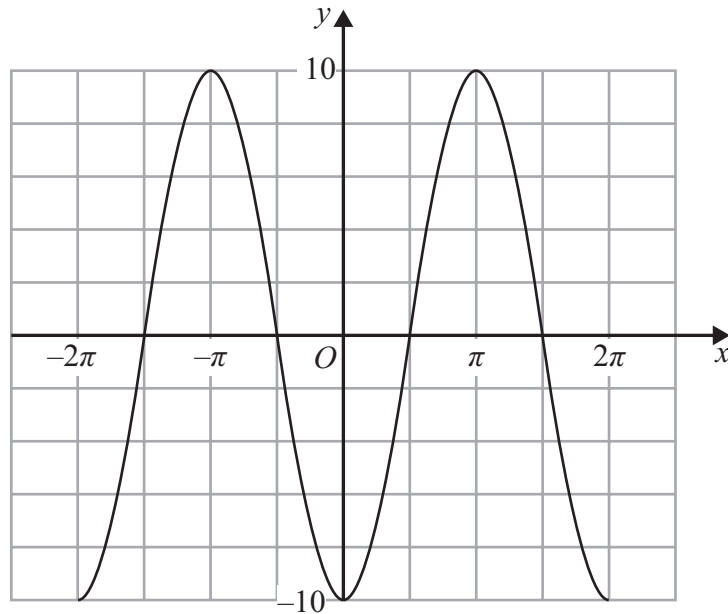


Diagram 1



Copy of Diagram 1

Only use this copy if you need to redraw your graph.

(b)(ii) _____

DO NOT WRITE IN THIS AREA

DO NOT WRITE IN THIS AREA

DO NOT WRITE IN THIS AREA



Question 9 continued

(c)(i)

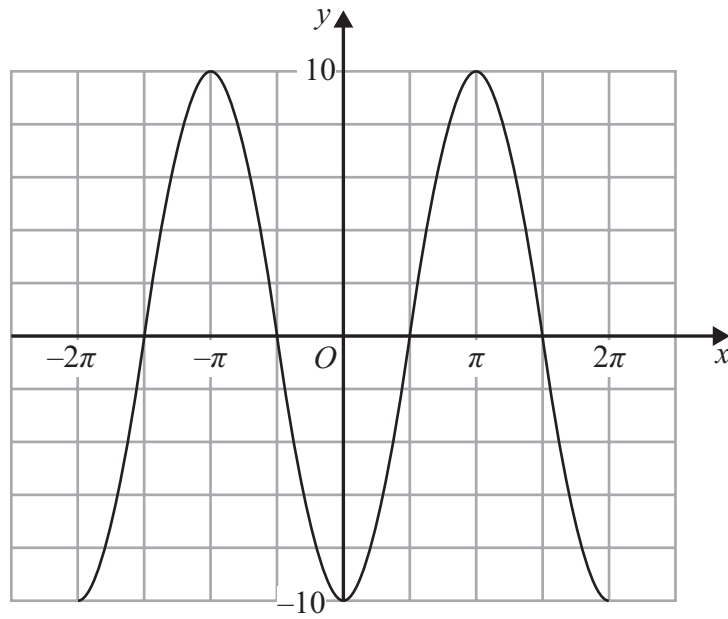
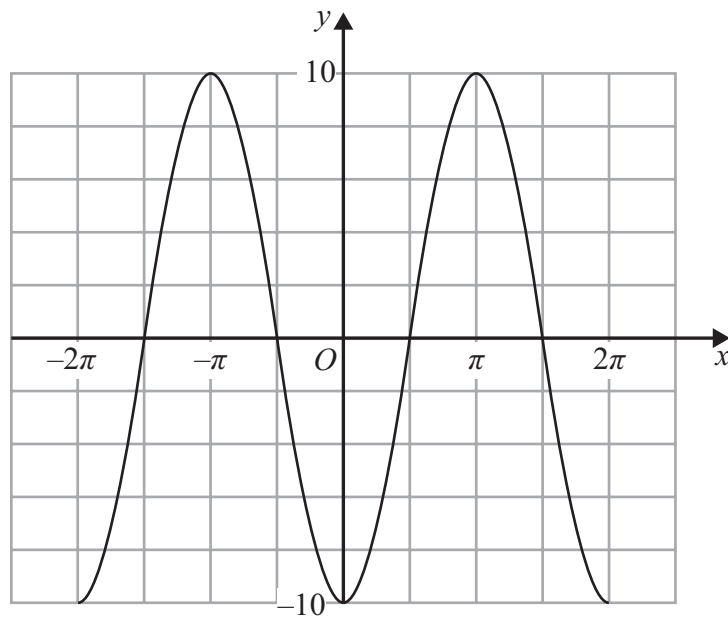


Diagram 2



Copy of Diagram 2

Only use this copy if you need to redraw your graph.

(c)(ii) _____

(Total for Question 9 is 9 marks)

TOTAL FOR PAPER IS 75 MARKS

DO NOT WRITE IN THIS AREA

DO NOT WRITE IN THIS AREA

DO NOT WRITE IN THIS AREA

