

Please check the examination details below before entering your candidate information

Candidate surname

Other names

Centre Number

Candidate Number

Pearson Edexcel International Advanced Level

Monday 19 January 2026

Morning (Time: 1 hour 30 minutes)

Paper
reference

WMA13/01

Mathematics
International Advanced Level
Pure Mathematics P3

You must have:

Mathematical Formulae and Statistical Tables (Yellow), calculator

Total Marks

Candidates may use any calculator permitted by Pearson regulations. Calculators must not have the facility for symbolic algebra manipulation, differentiation and integration, or have retrievable mathematical formulae stored in them.

Instructions

- Use **black** ink or ball-point pen.
- If pencil is used for diagrams/sketches/graphs it must be dark (HB or B).
- **Fill in the boxes** at the top of this page with your name, centre number and candidate number.
- Answer **all** questions and ensure that your answers to parts of questions are clearly labelled.
- Answer the questions in the spaces provided
– *there may be more space than you need.*
- You should show sufficient working to make your methods clear.
Answers without working may not gain full credit.
- Inexact answers should be given to three significant figures unless otherwise stated.

Information

- A booklet 'Mathematical Formulae and Statistical Tables' is provided.
- There are 10 questions in this question paper. The total mark for this paper is 75.
- The marks for **each** question are shown in brackets
– *use this as a guide as to how much time to spend on each question.*

Advice

- Read each question carefully before you start to answer it.
- Try to answer every question.
- Check your answers if you have time at the end.
- If you change your mind about an answer, cross it out and put your new answer and any working underneath.

Turn over ►

P78910A

©2026 Pearson Education Ltd.
C:1/1/1/




Pearson

7.

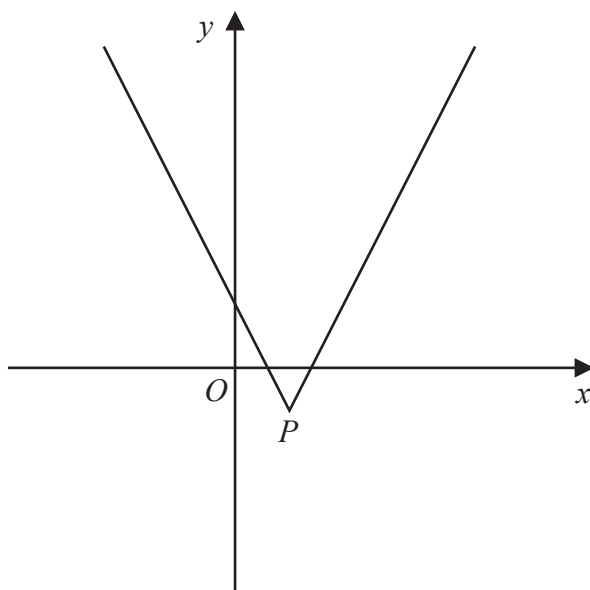


Figure 1

Figure 1 shows a sketch of part of the graph with equation $y = f(x)$, where

$$f(x) = |3x - 11| - 4$$

The vertex of the graph is at the point P , as shown in Figure 1.

(a) State the coordinates of P . (2)

(b) Solve the equation $f(x) = 8$ (3)

The line l has equation $y = mx$, where m is a constant.

Given that l intersects the graph of $y = f(x)$ at exactly one point,

(c) find the possible values of m . (3)

The graph with equation $y = f(x)$ is transformed onto the graph with equation $y = af(x - b)$, where a and b are constants.

Given that the vertex of the graph with equation $y = af(x - b)$ is $(5, 16)$

(d) find the value of a and the value of b . (2)



8. A curve has equation

$$x = e^{2 \tan y} \quad -\frac{\pi}{2} < y < \frac{\pi}{2}$$

Show that

$$\frac{dy}{dx} = \frac{a}{x(b + (\ln x)^n)}$$

where a , b and n are integers to be found.

(4)

DO NOT WRITE IN THIS AREA

DO NOT WRITE IN THIS AREA

DO NOT WRITE IN THIS AREA



